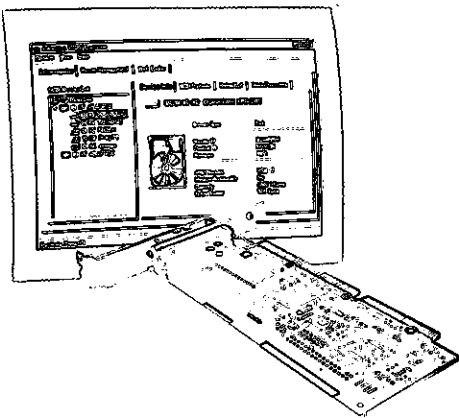


# ADAPTEC®

## AHA-1520

**Ideal for connecting hard drives and other high-performance SCSI peripherals to your PC**



### PRODUCT HIGHLIGHTS

- 10 MB/sec synchronous burst rate on the SCSI bus
- Plug-and-Play installation
- Adaptec EZ-SCSI® software

### Overview

Today's rapid growth in file sizes — thanks to multimedia, new software applications, and the Internet — requires larger hard drives, file servers, and high-performance peripherals for storing this information. The AHA-1520B host adapter provides the ideal solution for connecting these devices to a PC.

### Key Benefits

**Connection to Any SCSI Peripheral**  
The AHA-1520B is a complete kit with everything needed to connect up to 7 SCSI devices to a PC. These devices include internal and external hard drives, CD-ROM and CD-Recordables, tape and removable drives, scanners, and more.

### Unmatched Compatibility and Reliability

As with all Adaptec host adapters, the AHA-1520B has undergone rigorous compatibility testing in Adaptec test labs. With extensive compatibility, functionality, and environmental testing, users are assured of having a product that works seamlessly with virtually any SCSI device available.

### Maximize Peripheral Performance

The AHA-1520B allows users to take advantage of SCSI's fast connection for their peripherals. With increased data transfer rates and drastically

reduced wait times over parallel interface peripherals, AHA-1520B users will experience a dramatic increase in system performance. And since SCSI is the only connection that allows attachments to multiple external as well as internal peripherals, users get more connectivity for their systems with just one card.

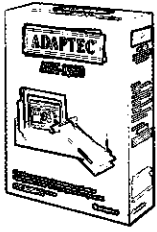
### Easy to Install and Use

Features such as Plug-and-Play ensure installing the AHA-1520B is quick and easy. Add Adaptec EZ-SCSI software (included) for MS-DOS® and Windows®, and the adapter takes care of everything — including determining which SCSI devices are present, setting termination automatically, loading necessary drivers, and modifying the system configuration files. And, our powerful Adaptec SCSISelect® optimization utility makes tuning the host adapter configuration a snap.

### Quality You Can Depend On

The AHA-1520B host adapter has received thousands of hours of reliability testing. Known for quality, Adaptec continues to deliver standard-setting products that are incorporated into the systems of virtually all major computer and peripheral manufacturers around the world.

## COMPLETE KIT CONTENTS



- AHA-1520B ISA-to-Fast SCSI-2 host adapter
- Adaptec EZ-SCSI software (on CD)
- Adaptec 6000 Family Manager Set® software
- Standard 3-position internal SCSI ribbon cable
- Complete user documentation

## EXTERNAL CONNECTOR



50-pin high-density

## TECHNICAL SPECIFICATIONS

<b>Computer Bus:</b>	ISA
<b>Interface Protocol:</b>	Programmed I/O (PIO)
<b>Host Bus Burst Data Rate:</b>	10 MB/sec
<b>Peripheral Bus:</b>	8-bit SCSI
<b>SCSI Synchronous Data Rate:</b>	Up to 10 MB/sec
<b>SCSI Asynchronous Data Rate:</b>	Up to 3 MB/sec
<b>Device Protocol:</b>	SCSI-1, SCSI-2
<b>Advanced SCSI Features:</b>	-Advanced SCSI Programming Interface (ASPI) compliant -Multithreaded I/O -Scatter/gather -Disconnect/reconnect -Plug-and-Play SCSI -Synchronous and asynchronous data transfer
<b>SCSI Termination:</b>	Single-ended, active, programmable via <i>SCSISelect</i>
<b>Hard Disk Capacity:</b>	Up to 8 Gbytes per disk
<b>Device Support:</b>	Up to 7 devices under DOS 5.0 and above
<b>Operating Environment:</b>	Microsoft® Windows® 95, Windows 3.1, Windows NT™, Windows for Workgroups, MS-DOS, IBM OS/2 2.x and 3.x, Novell NetWare 3.12 and 4.x, SCO UNIX 3.2 and UnixWare 1.x and 2.x
<b>Warranty:</b>	Five years

## PHYSICAL AND ENVIRONMENTAL SPECIFICATIONS

<b>Length:</b>	6.875 inches (17.5 cm)
<b>Height:</b>	2.375 inches (6.125 cm)
<b>Operating Temperature:</b>	0° C to 55° C (32° F to 131° F)
<b>Storage Temperature:</b>	-55( C to 85( C (-40( F to 167( F)
<b>Humidity (operating):</b>	10% to 95%, non condensing
<b>MTBF:</b>	755,775 hours
<b>Power Requirements:</b>	5.0V ± 0.25V at 0.51 amps, excluding terminator power

**adaptec**<sup>®</sup>

We move the information that moves your world.™

Adaptec, Inc.  
691 South Milpitas Boulevard  
Milpitas, California 95035  
Tel: (408) 945-8600  
Fax: (408) 262-2533

**Adaptec Europe-Belgium**  
Tel: (32) 2-352-34-11  
Fax: (32) 2-352-34-00

**Adaptec Japan-Tokyo**  
Tel: (81) 3-5365-6700  
Fax: ((81) 3-5365-6950

**Adaptec Singapore**  
Tel: (65) 278-7300  
Fax: (65) 273-0163

**Literature:**  
1-800-934-2766 (USA and Canada)  
or (510) 732-3829

**Pre-sales Support:**  
1-800-442-7274 (USA and Canada)  
or (408) 957-7274

**World Wide Web:** <http://www.adaptec.com>

**Internet ftp server:** <ftp.adaptec.com>

**CompuServe:** GO ADAPTEC

**Adaptec USA Bulletin Board Service (BBS):**  
(408) 945-7727 (up to 28,800 bps, using 8 bits, 1 stop bit, no parity)

**Interactive FAX:** (408) 957-7150

Copyright 1997 Adaptec, Inc. All rights reserved. Adaptec, the Adaptec logo, the Adaptec tagline, AHA, EZ-SCSI and SCSISelect are trademarks of Adaptec Inc., which may be registered in some jurisdictions. Microsoft, Windows, Windows 95 and the Windows 95 logo are trademarks and Windows NT is a trademark of Microsoft Corporation used under license. All other trademarks used are owned by their respective owners.

Information supplied by Adaptec, Inc. is believed to be accurate and reliable at the time of printing, but Adaptec, Inc. assumes no responsibility for any errors that may appear in this document. Adaptec, Inc. reserves the right, without notice, to make changes in product design or specifications. Information is subject to change without notice.

